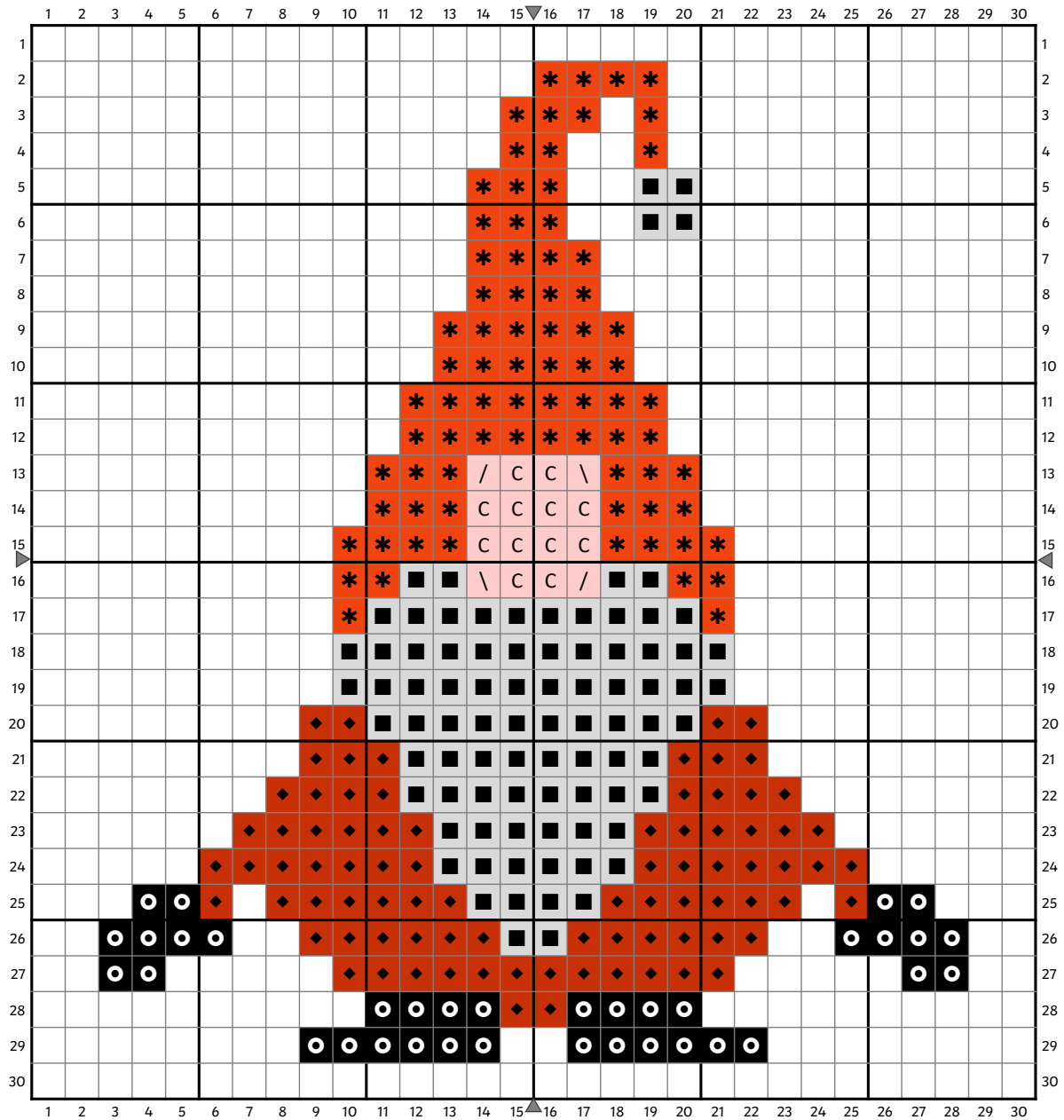


Christmas Cross Stitch Gnome Pattern



C DMC 967
 BLANC
 ◆ DMC 816
 * DMC 321
 ○ BLACK

/ These stitches are half stitches. They should be completed in DMC 967.

Loving this cross stitch pattern?



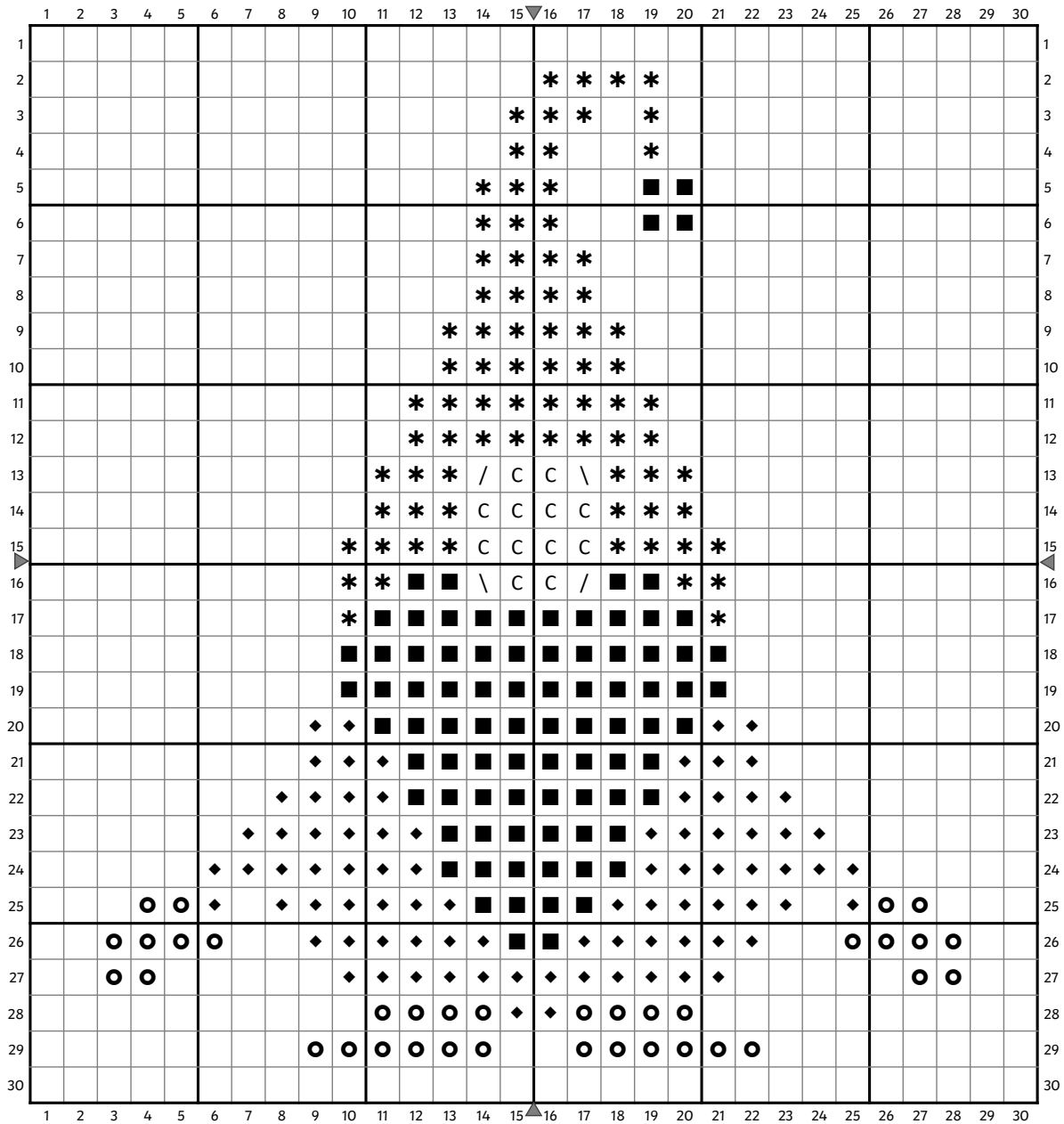
Check out Twinkl Crafts' Cross Stitch Hub, full of fun cross stitch patterns and video tutorials so you can find the perfect project for you.



Check out Twinkl Crafts for more fun stitching projects!



Christmas Cross Stitch Gnome Pattern



- C Skin tone
- White
- ◆ Dark Red
- * Bright red
- Black

/

 These stitches are half stitches. They should be completed in the same thread colour as C.

Loving this cross stitch pattern?



Check out Twinkl Crafts' Cross Stitch Hub, full of fun cross stitch patterns and video tutorials so you can find the perfect project for you.



Check out Twinkl Crafts for more fun stitching projects!

